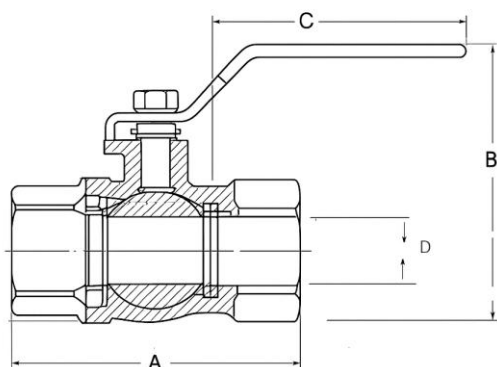


Single Piece Ball Valve (One-piece body ball valve)

STAINLESS STEEL BALL VALVE
F/F SCREWED END



Features & Benefits

- Compact one-piece body — zero body leakage risk
- Reduced bore for smooth flow with minimum pressure drop
- PTFE seat for excellent sealing and chemical compatibility
- Blow-out proof stem for operator safety
- 100% factory tested and traceable
- Suitable for wide range of media (water, oil, gas, steam, air)
- Long service life, low torque operation

Construction Features

Component	Description
Body	One-piece casting or forging with integral end connections (threaded or socket weld). No body joint to leak.
Ball	Precision-machined stainless steel or brass ball with mirror-finished surface for low operating torque and tight shut-off.
Seats	PTFE, RPTFE, PEEK or other materials on customer request.
Stem	Blow-out proof design; machined from bar stock and fitted with PTFE or graphite packing for leak-free operation.
Handle	Lockable lever handle made from SS or coated carbon steel for easy operation.
End Connection	BSP (ISO 228), NPT (ANSI B1.20.1), Socket Weld (ASME B16.11), or Butt Weld (ASME B16.25).

Material of Construction

Part Name	Material Options
Body	CF8 (SS304), CF8M (SS316), WCB (Carbon Steel), Brass, Duplex SS
Ball	SS316, SS304, Chrome Plated Brass
Stem	SS316, SS304
Seats	PTFE, RPTFE, CFT, PEEK
Body Seal	PTFE, Graphite
Stem Seal (Packing)	PTFE, Graphite
Lever Handle	SS / Carbon Steel with PVC sleeve
Lever Nut / Stopper	SS304
Gland Nut	SS304, SS316
Fasteners	SS304, SS316

Single Piece Ball Valve – Dimensional Data

(Threaded Ends, Reduced Bore Type)

Design & Testing Standards: ASME B16.34 / API 598 / ISO 17292 / EN 12266-1

End Connection: BSP / NPT Female Threads as per ISO 228 / ASME B1.20.1

Size (Inch)	Nominal Size (DN)	A (Length) mm	B (Height) mm	C (Handle Length) mm	D (Bore Ø) mm	Weight (Approx.) kg
¼"	DN8	55	45	90	6	0.25
⅜"	DN10	60	50	90	9	0.30
½"	DN15	65	55	100	12	0.35
¾"	DN20	75	60	110	15	0.45
1"	DN25	90	65	120	20	0.60
1¼"	DN32	100	70	150	25	0.90
1½"	DN40	110	80	160	32	1.20
2"	DN50	120	90	180	40	1.70
2½"	DN65	150	100	200	50	2.20
3"	DN80	170	115	220	65	3.10
4"	DN100	200	125	250	80	4.50

Notes:

- All dimensions are in **millimeters (mm)** Suitable for **1000 PSI (WOG)** pressure rating.

(Dimensions may vary slightly with material and pressure class.)